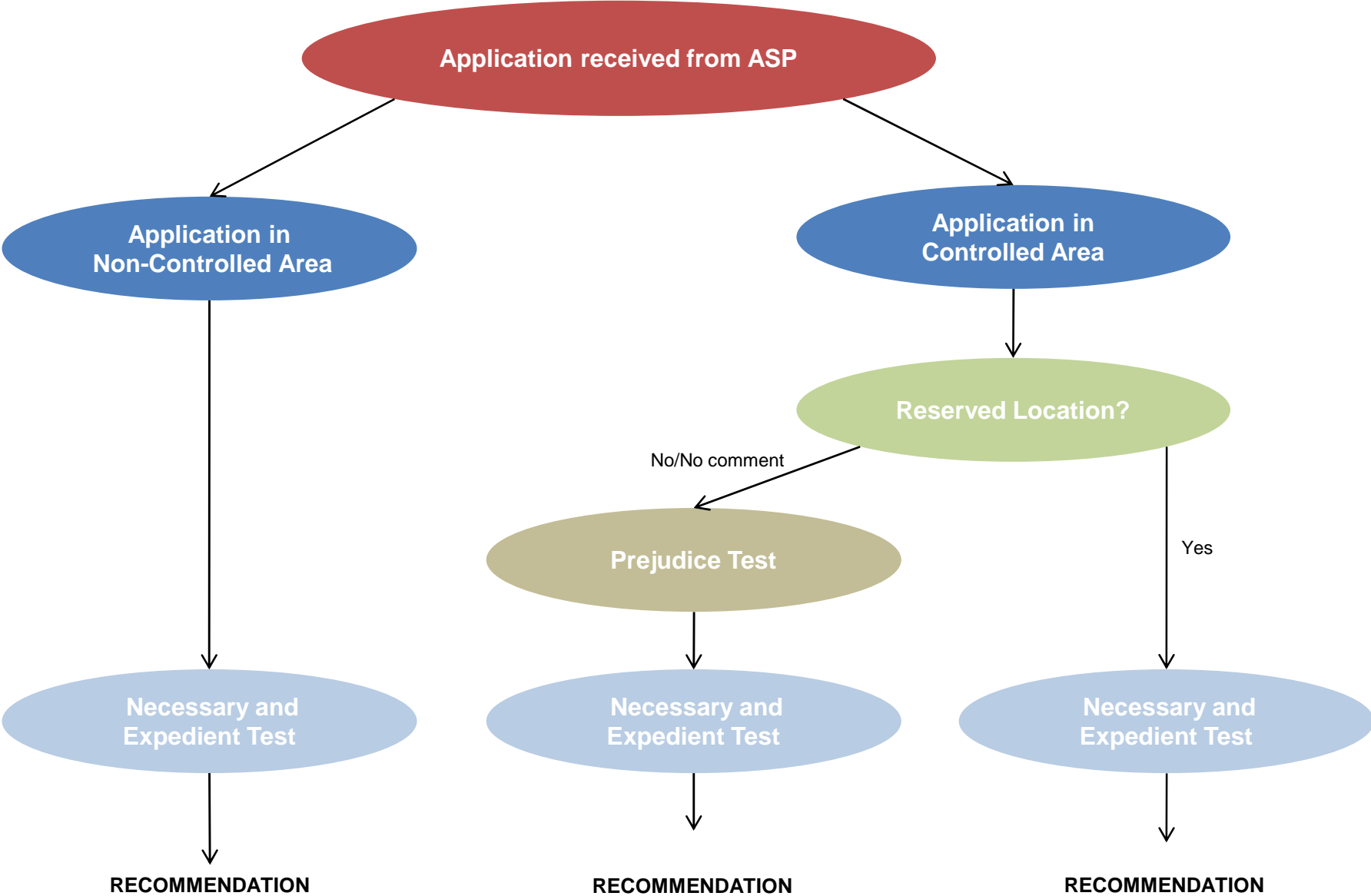


CONTRACT APPLICATION REVIEW PROCESS



All LPC members must declare any interest in the application. if a member has an interest in the application they must abstain from the voting process

CONTRACT APPLICATION FRAMEWORK

Name of application: _____

Reserved Location

Area for Consideration (See Guidance document)	Yes/No
On PCT reserved locality list	
Less than 2750 patients	
Less than 2750 patients but contains a significant population with higher health needs	

RECOMMENDATION

- Not Reserved Location
 Reserved Location
 No Comment

Prejudice Test

Area for Consideration (See Guidance document)	Yes/No Fact
Does the application prejudice the proper provision of primary or pharmaceutical services	

RECOMMENDATION

- Prejudices
 Does not Prejudice
 No Comment

Necessary & Expedient Test for Controlled & Non-Controlled

Area for Consideration (See Guidance document)	Yes/No/Fact	Consideration (- -0++)
PNA		
Distance to nearest contractor		
Adequacy of opening hours of existing contractors <i>including non-trading with license already granted</i>		
Adequacy of existing delivery services		
Planning applications		
Existing pharmacy has moved/closed		
Suitable premises available		
Estimated population of neighbourhood		
Changes to population		
Application improves reasonable competition and choice		
Availability of services		
Neighbourhood characteristics		
Complaints about current services		
<i>LPC position on previous similar applications</i>		
<i>DH guidance to PCTs consulted</i> http://www.dh.gov.uk/en/Publicationsandstatistics/Publications/PublicationsPolicyAndGuidance/DH_4107573		

RECOMMENDATION

- Support No Comment
 Do not support

Application supported on the basis of:

- Necessity Expediency Choice Competition

All LPC members must declare any interest in the application. If a member has an interest in the application they must abstain from the voting process

Classification of Area as Controlled or Non-Controlled

Name of area to be classified: _____

Area for Consideration (See Guidance document)	Yes/No/Fact	Consideration (- -0++)
Population more than 2750 www.cambridgeshire.gov.uk/community/population		
Post Office www.postoffice.co.uk/portal/pofinder?catId=20700386		
Grocery/Convenience Store www.yell.co.uk		
Primary School www.yell.co.uk		
Secondary School www.yell.co.uk		
Industry/business/work www.yell.co.uk		
Availability of reasonable public transport		
<i>Availability of GP/medical/dispensing doctor services</i> www.nhs.uk <i>Contact PCT for disp. Doctor list</i>		
Planning Applications http://planapps2.cambridgeshire.gov.uk		
Settlement pattern www.multimaps.co.uk		
<i>Opinions obtained from all contractors within a 2 mile radius, including non-trading with license already granted</i>		
Any other factors		

RECOMMENDATION:

Non-controlled

Controlled

All LPC members must declare any interest in the application. If a member has an interest in the application they must abstain from the voting process